



FUSE

WINNEBAGO



*On the Cover: 23T Winter Gray Full-Body Paint
Interior: 23T Element with Glazed Driftwood Cabinetry*

Stylish, flexible,
and fuel-efficient

Designed around the Ford® Power Stroke® diesel engine, the Winnebago Fuse® comfortably accommodates up to four adults in a nimble, fuel-efficient package. Two surprisingly roomy, slideout-equipped floorplans come complete with a full galley, entertainment system, and a full bath with a shower. In the rear-bath 23A, the Flex Bed System lets you opt for twin beds or a single queen

bed, while the 23T features a corner bath and walkaround queen bed. Each Fuse includes a powered armless patio awning with LED lighting, solar charging system, and a compressor-driven refrigerator, while the available bike rack and a host of other options let you configure your Fuse to your needs and taste.

This brochure features the
Fuse 23T floorplan

Fuse | Lounge

Once you arrive, the Fuse's lounge serves as an ideal headquarters and comfortable living area. The 23A features our TrueComfort+ Sofa and movable pedestal table, while the 23T includes two Bench Seats and a large table. In both floorplans, the passenger seat swivels for additional seating. An HDTV is standard, as is the Bluetooth-equipped coach stereo system. Tinted windows help keep the coach cooler during the day, while the MCD blackout roller shades can be lowered at night for light-blocking privacy.

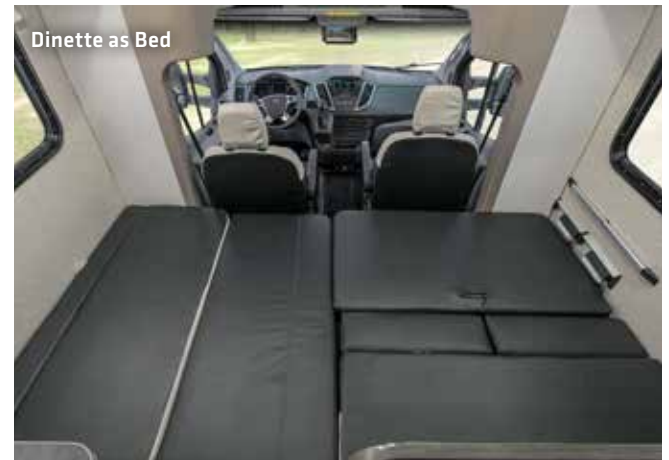




Dinette



Dinette



Dinette as Bed



Dinette Down



Dinette Storage

Fuse | Galley

The new 4.7 (23A) and 7.0 (23T) cubic-foot refrigerator/freezer is compressor-driven, keeping things quiet and cool without depleting your propane supply. When it's time to get cooking, turn to the three-burner range with microwave and available oven in the 23T or the two-burner range and microwave/convection oven in the 23A. In both floorplans, the cover on the stainless steel sink provides extra counter space for food prep.



When night falls, the Flex Bed System in the 23A lets you choose between a queen or twin beds while the 23T features a walkaround queen bed with a memory foam mattress. Each floorplan also offers an optional TV location for catching a late show in bed and a roomy stand-alone wardrobe. The 23A and 23T feature a complete bath with separate shower (with retractable, self-cleaning shower screen), sink and toilet, skylight, and powered roof vent.





On the road, the Fuse cab puts you in complete control. The comfortable seats feature armrests, fixed lumbar supports and adjustable headrests, plus swivel, recline and slide functions. Driver conveniences include an integrated navigation system with 6" multi-function HD display, SiriusXM® satellite radio, lane-departure warning system, rearview monitor system with color camera, power exterior mirrors with defrost and turn signals, 12-volt powerpoints and more.



Mirror with Turn Signal



Cab Window Blinds

Powered Patio Awning



Once in camp, make yourself at home under the powered patio awning with LED lighting. The exterior speaker system lets you take the beat outdoors, while the convenient lighted rear storage compartment helps keep larger items organized and accessible. The rear ladder and aluminum cab steps with ground-effect LED lighting are standard equipment, and an available bike rack lets you bring along your favorite two-wheelers.



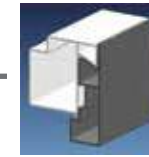
Optional Aluminum Alloy Wheels



Aluminum Cab Steps



Exterior Service Center



Interlocking Joints Specially engineered interlocking joints connect the floor, sidewalls, and roof where competitors often rely on simple screws to bear the weight.



Laser-Cut Tubing Precision laser cutters create precise joints in structural steel that are stronger and require less welding.

Fiberglass Roof The one-piece fiberglass roof is backed by a 10-year limited parts-and-labor roof skin warranty.

Thermo-Panel® Sidewalls By layering fiberglass and high-density block foam insulation with welded aluminum support structures, we create some of the industry's strongest, most durable, and lightweight sidewalls.

Embedded Steel Metal substructures embedded into the sidewall provide solid attachment points to keep cabinets and appliances mounted securely in place.

E-coating An electrodeposition coating helps protect critical steel components.

Solid Framework Structural extruded aluminum creates an extremely strong and solid frame.

**SUPER
STRUCTURE**

BUILT TO LAST

From our smallest Class C coach to our largest diesel-pusher, coaches are built to Winnebago's legendary SuperStructure® construction design. It's a process developed and refined over more than 60 years of building some of the strongest, most durable coaches in the industry.

TESTING Before rolling out of our factories, every coach undergoes an extensive 113-point inspection. Each coach also passes a high-pressure water test that simulates rain at a rate of 50-inches per hour to check for leaks. During the design process, our computer simulations, physical testing center, and rigorous test track ensure each model is built to last.



Visit BetterBuiltRVs.com to gain real insight into what goes into a Winnebago motorhome.

DETAILS At Winnebago, we treat the features you can't see with the same care as the ones you can. Look in the access panels of some of our competitors' coaches and you'll see loose insulation and wires haphazardly strewn about. Winnebago maintains a clean fit and finish throughout so your coach will last for the long haul.



BUILT IN-HOUSE We process and finish key aluminum parts. We rotocast our own plastic components. In fact, we manufacture most of our own parts so they are designed to fit the space, rather than fitting the space to an awkward off-the-shelf component size.



**SUPER
STRUCTURE**
BUILT TO LAST

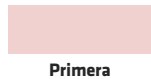
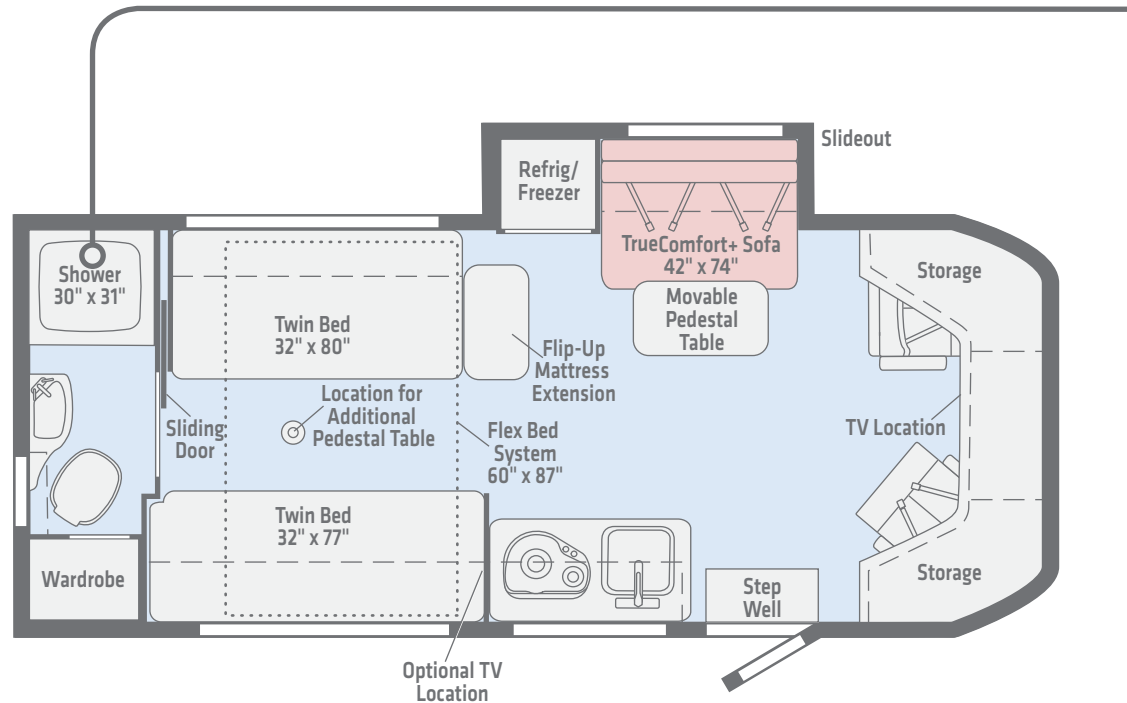
TAKE A TOUR We're proud of our processes, state-of-the-art facilities, and the people who make Winnebago number one. We invite you to visit our complex in Forest City, Iowa, for a firsthand look at the dedication and technology behind every motorhome we build.



Call (641) 585-6936 or (800) 643-4892 or visit us online at WinnebagoInd.com/company/visit for more information.

23A

In the rear-bath 23A, our Flex Bed System lets you opt for twin beds or a single queen bed; the TrueComfort+ Sofa in the lounge provides added sleeping capacity.



Primera



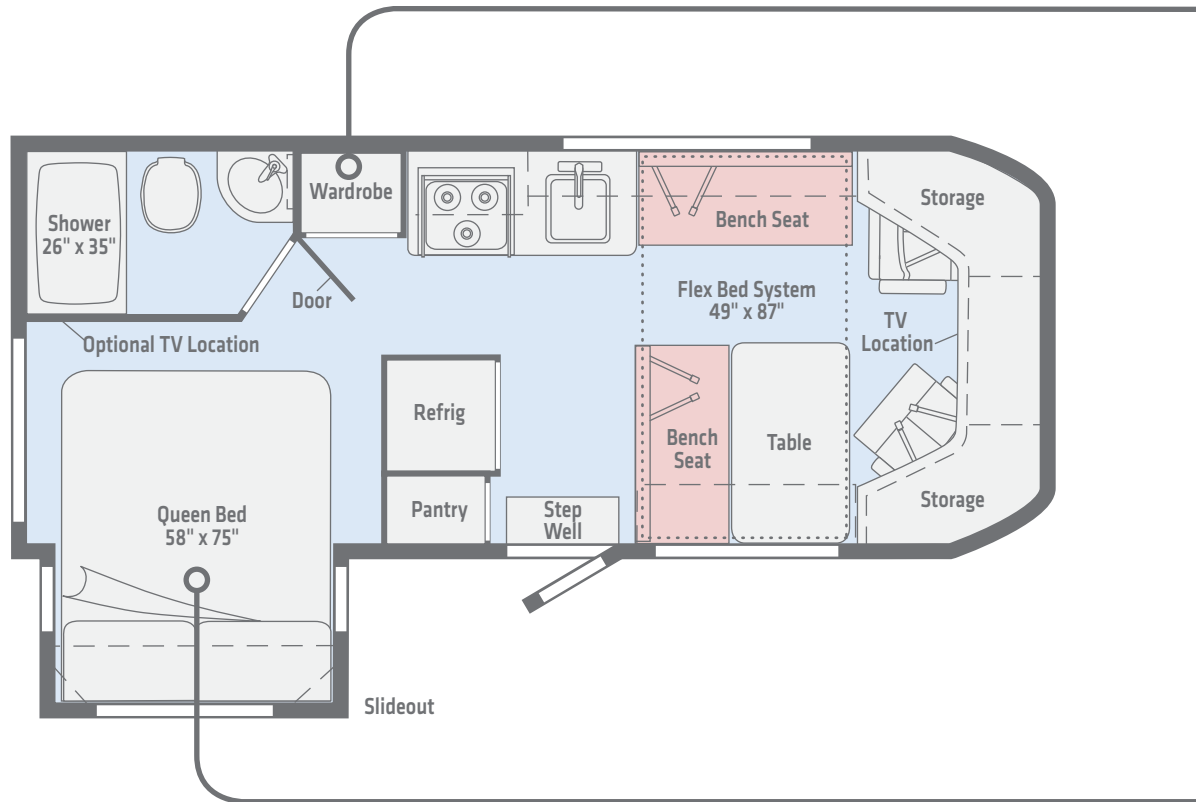
Vinyl

Length 24'
Ext. Storage (cu. ft.) 23.2
Seating 4

Dimensions shown are for sleeping and shower space only and may vary due to styling differences. Dashed lines denote overhead storage areas. Floorplans and specifications are also available online at WinnebagoInd.com.

23T

The 23T features a rear corner bath and walkaround queen bed, while the entire front lounge converts into a generous sleeping area.



Primer



Vinyl

Length 24'
Ext. Storage (cu. ft.) 35.2
Seating 4

Dimensions shown are for sleeping and shower space only and may vary due to styling differences. Dashed lines denote overhead storage areas. Floorplans and specifications are also available online at WinnebagoInd.com.

Fuse | Exterior Graphics

The Fuse comes standard with full-body paint.



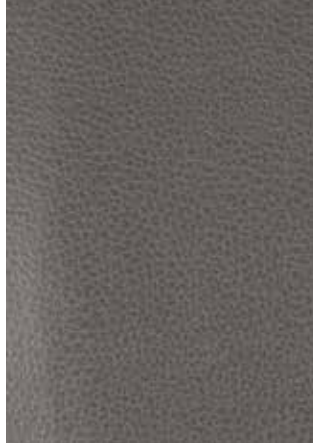
Winter Gray
FULL-BODY PAINT

Choose between two collections and two wood finishes.

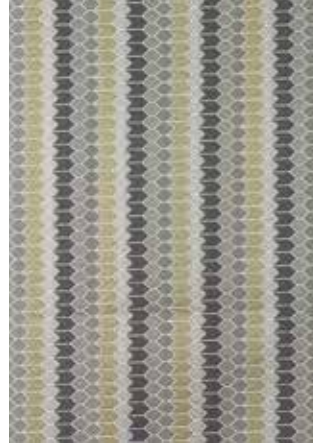
Spark



Primera by Ultrafabrics



Primera Accent



Feature Fabric



Vinyl Flooring



Bed Cover



Backsplash



Wall Material



Laminate Countertop

Woods



Glazed Kona



Glazed Driftwood

Winnebago® reserves the right to change décor materials and specifications without notice or obligation.

Choose between two collections and two wood finishes.

Element



Primera by Ultrafabrics



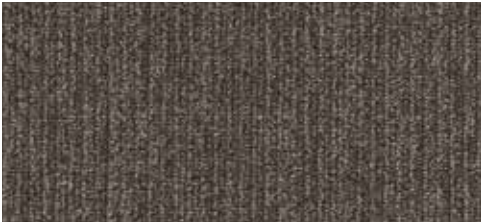
Primera Accent



Feature Fabric



Vinyl Flooring



Bed Cover



Backsplash



Wall Material



Laminate Countertop

Woods



Glazed Kona



Glazed Driftwood

Winnebago® reserves the right to change décor materials and specifications without notice or obligation.

The Holcombes

Peter, Kathy, and Abby - have been full-time RVing since 2014. Using photos and videos shot by Peter, a professional photographer, the family has documented their many adventures around the continent including hiking, paddling, climbing, canyoneering, fishing, and more. All from the comfort of their Winnebago.

You can follow their journey at WinnebagoLife.com. You'll also find hundreds of other great stories from GoLife's outstanding contributors, along with how-to articles, gear reviews, RVing tips, and much more.



To learn more about the Holcombes' adventures, visit:



WinnebagoLife.com/about



Weights & Measures	23A	23T
Length	24'	24'
Exterior Height ¹	10'1.5"	10'1.5"
Exterior Width	7'6.25"	7'6.25"
Exterior Storage ² (cu. ft.)	23.2	35.2
Awning Length	16'	10'4"
Interior Height	6'8"	6'8"
Interior Width	7'3"	7'3"
Freshwater Tank Capacity ³ (gal.)	27	33
Water Heater Capacity (gal.)	6	6
Holding Tank Capacity - Black/Gray ³ (gal.)	43/40	40/43
LP Capacity ⁴ (gal.)	13	13
Fuel Capacity (gal.)	25	25
GCWR ⁵ (lbs.)	13,500	13,500
GVWR (lbs.)	10,360	10,360
GAWR - Front (lbs.)	4,130	4,130
GAWR - Rear (lbs.)	7,275	7,275
Wheelbase	156"	156"
Seating Capacity	4	4

Ford® Transit Chassis

185-hp. 3.2L I5 diesel engine, 6-speed automatic overdrive transmission w/SelectShift®

Trailer Hitch⁶ 5,000-lb. drawbar/350-lb. maximum vertical tongue weight

Stainless steel wheel liners

OPTIONAL EQUIPMENT

Electric stabilizing jacks

Stylized alloy wheels

Cab Conveniences

Cab seats armrests, fixed lumbar support, adjustable headrest, and multi-adjustable swivel (passenger seat only)/recline/slide

SYNC® 3 w/MyFord® Touch, navigation, 6" multi-function HD display, SiriusXM® satellite radio, lane departure warning system

Rearview Monitor System w/color camera

Airbags driver and front passenger

3-point seat belts

Cruise control

Power steering w/tilt wheel

12-volt powerpoints

Power door locks

Sunvisors

Power exterior mirrors w/defrost/turn signal

Cab window blinds

Black vinyl flooring

OPTIONAL EQUIPMENT

Primera® seat covers w/booster seat cushions (passenger seat)

Interior

HDTV

Coach Stereo System AM/FM, CD/DVD player, Bluetooth, front input jack, and alarm clock

Satellite system ready

MCD blackout roller shades

Tinted windows

Amplified digital HDTV antenna

Systems monitor panel

Roof vent

Vinyl ceiling

LED lighting

Assist bar

Vinyl flooring throughout

USB chargers

Sofa/sleeper (23A)

OPTIONAL EQUIPMENT

Powered ventilator fan

Galley

Laminate countertops

Flip-up countertop extension (23A)

Double-door refrigerator/freezer

2-burner range top w/glass cover (23A)

3-burner range top (23T)

Microwave oven w/touch control (23T)

Microwave/convection oven w/touch control (23A)

Decorative backsplash

Stainless steel sink w/sink cover

Pantry (23T)

OPTIONAL EQUIPMENT

3-burner range top w/oven (23T)

Bath

Shower w/wall surround 30"x31" (23A)

Shower w/wall surround 26"x35" (23T)

Retractable, self-cleaning shower screen

Skylight

Flexible showerhead

Toilet w/foot pedal

Fiberglass sink molded into countertop

Powered roof vent

Mirror

Medicine cabinet

Robe hook(s)

Towel ring(s)

Tissue holder

Shelf (23A)

Bedroom

Flex Bed System (23A)

Deluxe Sleep System w/adjustable headrest (23A)

Twin beds w/foam mattresses and access to storage below (23A)

Queen bed w/memory foam mattress and mattress cover (23T)

Room divider curtain

Wardrobe

OPTIONAL EQUIPMENT

24" HDTV

Exterior

Porch light w/interior switch

Premium high-gloss skin

Lighted rear storage compartment

Exterior speaker system

Powered patio awning w/LED lighting

Aluminum cab steps w/ground-effect LED lighting

Ladder

OPTIONAL EQUIPMENT

Bike rack

Heating & Cooling System

20,000 BTU low-profile, ducted furnace

Low profile air conditioner w/1,800-watt heat strip

Electrical System

Exterior AC duplex receptacle and TV jack

AC/DC load center, 45-amp. converter/charger

2,500-watt Cummins® Onan® LP generator w/automatic changeover switch

30-amp power cord

Automatic dual-battery charge control

Auxiliary start circuit

2 deep-cycle, Group 24 batteries

Coach battery disconnect system

2 100-watt solar panels w/battery charge controller

OPTIONAL EQUIPMENT

1,000-watt AC/DC inverter w/remote panel

Plumbing System

Service Center city water hookup, exterior wash station w/lighted pump switch, 10' sewer hose, coiled water hose, QuickConnect,[®] and sprayer head

Water tank fill w/lockable door

6-gal./110V/LP gas water heater

TrueLevel™ holding tank monitoring system

Permanent-mount LP tank w/gauge

On-demand water pump

Water system winterization package

Holding tank flushing system

OPTIONAL EQUIPMENT

Electric heated drainage system

Safety

Child seat tether anchor (23T)

LP, smoke, and carbon monoxide detectors

10 BC fire extinguisher

Ground fault interrupter

Warranty⁶

12-month/15,000-mile basic limited warranty⁷

36-month/36,000-mile limited warranty on structure⁷

10-year limited parts-and-labor warranty on roof skin⁷

FOOTNOTES

1. The height of each model is measured to the top of the tallest standard feature and is based on the curb weight of a typically equipped unit. The actual height of your vehicle may vary by several inches depending on chassis or equipment variations. Please contact your dealer for further information.
2. The load capacity of your motorhome is designated by weight, not by volume, so you cannot necessarily use all available space when loading your motorhome.
3. Capacities are based on measurements prior to tank installation. Slight capacity variations can result due to installation applications.
4. Capacities shown are tank manufacture's listed water capacity (W.C.). Actual filled LP capacity is 80% of listing due to overfilling prevention device on tank.
5. Actual towing capacity is dependent on your particular loading and towing circumstances which includes the GVWR, GAWR, and GCWR, as well as adequate trailer brakes. Please refer to the Operator's Manual of your vehicle for further towing information.
6. See separate chassis warranty.
7. See your dealer for complete warranty information.

NA Not Available

Not all items available in combination. See dealer for details.

Winnebago's[®] continuing program of product improvement makes specifications, equipment, model availability, and prices subject to change without notice. Published content reflects the most current product information at time of printing. Please consult your dealer for individual vehicle features and specifications.



LAMESA REC VAN

LaMesaRV.com
800-496-8778